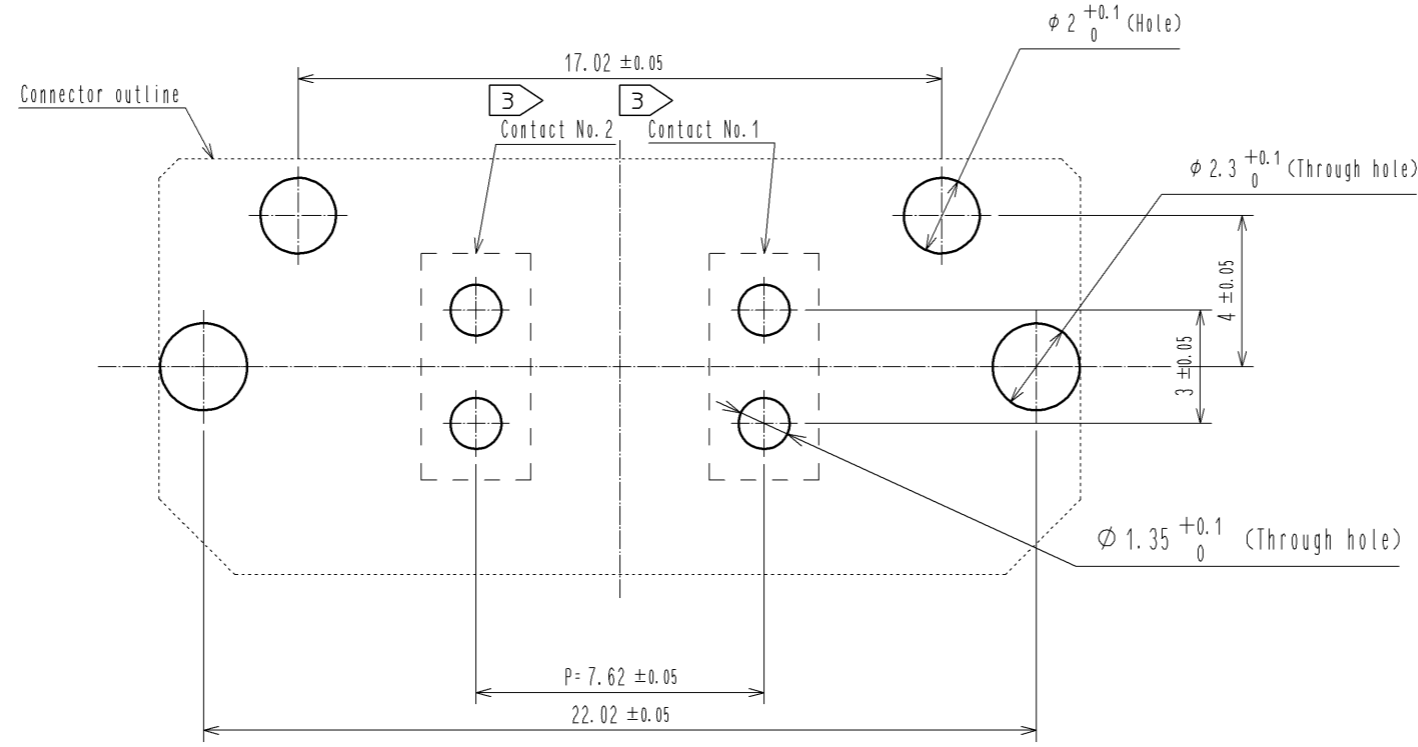


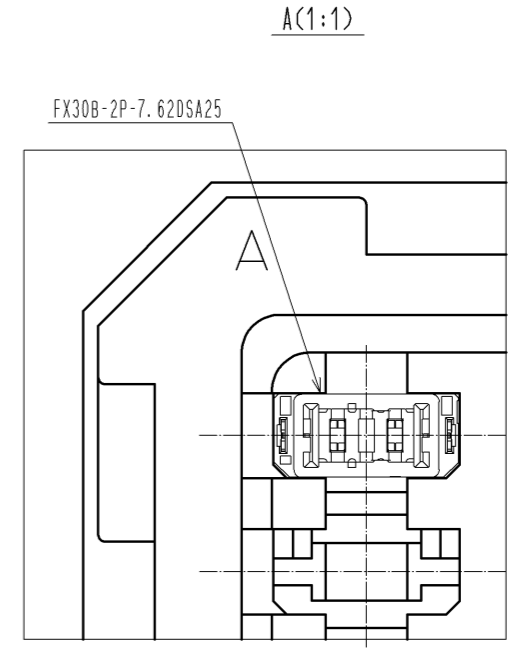
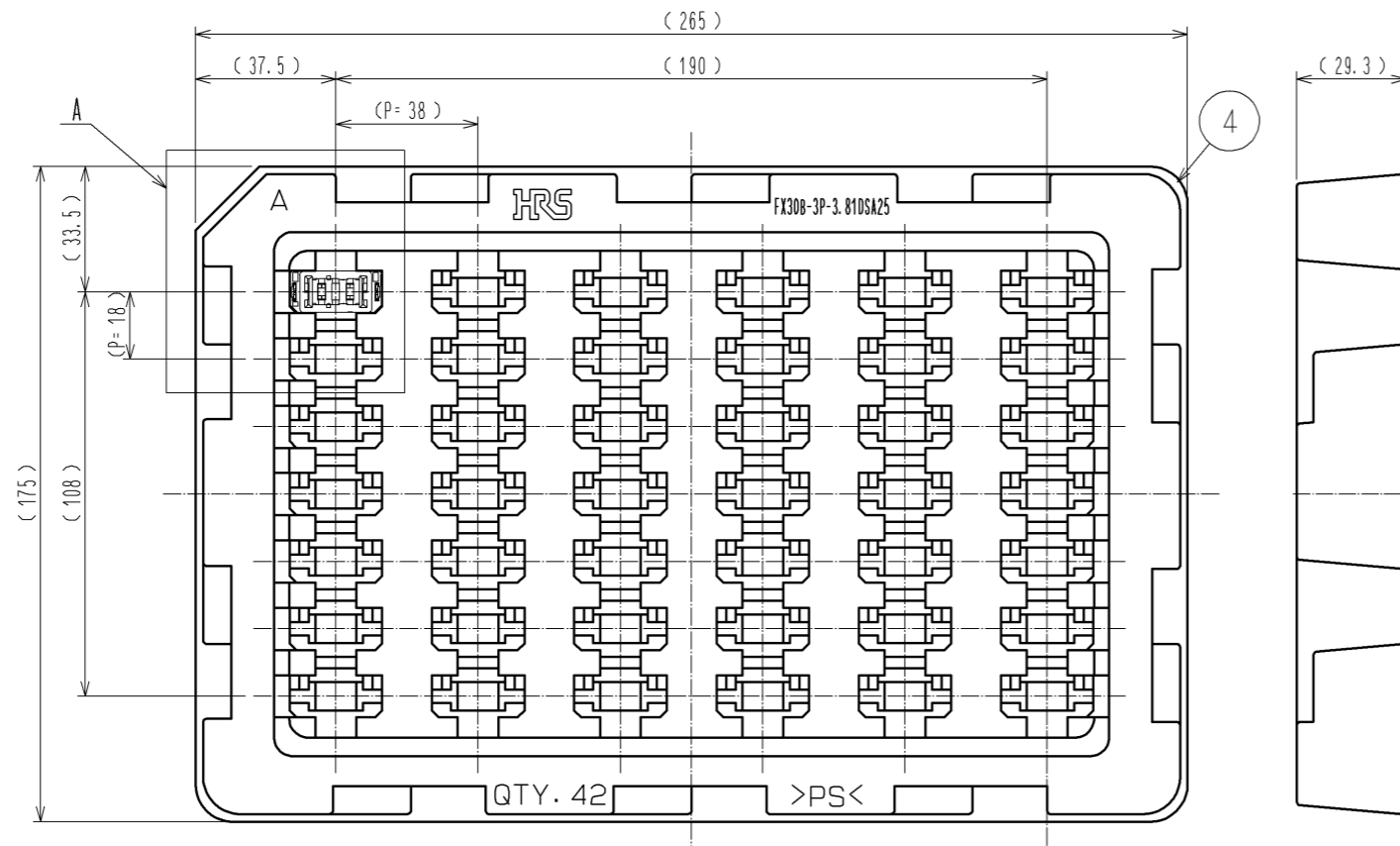
- NOTE
- ① This product is packaged in tray. (42pcs/tray)
  - ② Blemish and hit mark can be occurred through out the manufacturing process which doesn't affect quality level. Also, black spot could be observed on the surface of housing.
  - ③ For the contact NO., adjacent two pairs of leads placed back-to-back (4 leads in total) Compose one line.
  - ④ Misalignment absorbing range: ±0.3mm max.
  - ⑤ The dimension in parentheses are for references.
  - ⑥ Lot NO. is indicated at either one of the position as shown.

2	Copper alloy	Contact area: Gold-plating 0.1 μm		4	Polystyrene			
		Lead area: Tin-plating 1.0 μm						
		Under plating: Nickel 1.0 μm						
1	Polyamide	Black UL94V-0		3	Phosphor bronze			
		Tin-plating 3.0 μm						
		Under plating: Nickel 1.0 μm						
NO.	MATERIAL	FINISH	REMARKS	NO.	MATERIAL	FINISH	REMARKS	
UNITS mm		SCALE 2 : 1	COUNT 	DESCRIPTION OF REVISIONS		DESIGNED	CHECKED	DATE
<b>HRS</b> HIROSE ELECTRIC CO., LTD.		APPROVED : HS. OKAWA	14.09.12	DRAWING NO. EDC3-359158-00				
		CHECKED : KN. SHIBUYA	14.09.12	PART NO. FX30B-2P-7.62DSA25				
		DESIGNED : DK. AIMOTO	14.09.12	CODE NO. CL570-3205-1-00				
		DRAWN : DK. AIMOTO	14.09.12					

Recommended hole pattern dimension of PCB(5:1)  
(Connector mounting side, PCB thickness: t=1.6mm)



1 Drawing for packaging(1:2)



<b>HRS</b>	DRAWING NO.	EDC3-359158-00	△ 2/2
	PART NO.	FX30B-2P-7.62DSA25	
	CODE NO.	CL570-3205-1-00	